



CONSOLITECH Corp.

P/N: PTA-8556/8558

Product Name: **AV Show WUXGA**

*Consolitech Corp. Taiwan
10F-2, No57, Sec 2, Tun Hwa South Road,
Taipei Taiwan, R.O.C.
Tel:886-02-27069655
Fax: 886-02-27069074
E-mail: info@consolitech.com.tw*

Multimedia Products Design and Manufacture

P/N: PTA-8556/8558

Product Name: *AV Show WUXGA*



Product Introduction

***Supports High Resolution and Wide-Screen PC Monitor,
Color Enhancement , PIP, Video Noise Reduction.***



Model A

- S-Video IN
- Component IN
- CV IN
- DVI or D-Sub OUT



Model B

- S-Video IN
- Component IN
- CV IN (By Convert Cable)
- DVI or D-Sub OUT

P/N: PTA-8556/8558

Product Name: *AV Show WUXGA*



Key Features

- Display TV and external video source on PC monitor
- TV tuner built-in for NTSC-M, PAL B&G, D&K, I, M/N or SECAM D&K or L
- Provides color enhancement function to improve video quality
- Supports video noise reduction
- Display output resolutions up to 1920x1200
- Support DVI or D-Sub connector (Model no. PTA-8556 for DVI and PTA-8558 for D-Sub)
- YPbPr Input resolutions support to 1920x1080P (D1-D5)
- Supports 16:9, 16:10, 4:3 and zoomed display
- Selectable TV or VGA display on screen
- Supports 4 inputs video source: TV, Composite Video, S-Video and YPbPr Component Video
- Auto-scan TV channel (frequency table and all frequency scan)
- Supports PIP function
- Auto Power off by sleep timer settings between 10/30/60/90/120 minutes
- Stereo audio decoder for MTS, EIAJ, NICAM
- Favorite TV channel setting OSD display for TV setting
- IR remote control



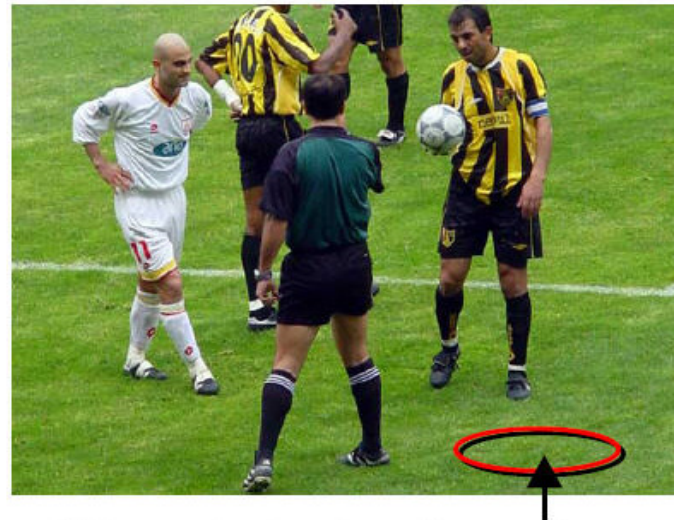
Video Performance by *Active Color Management*

- Rich color differentiation

Video **Without** WUXGA TV Box



Video **With** WUXGA TV Box



Enhance single color – Green enhance

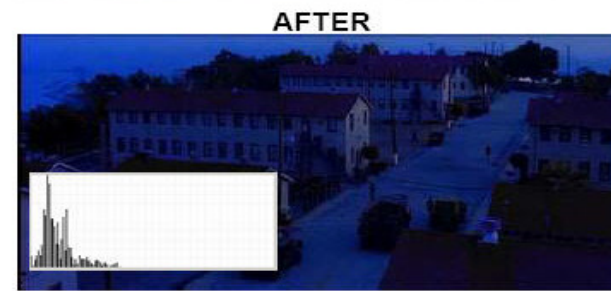
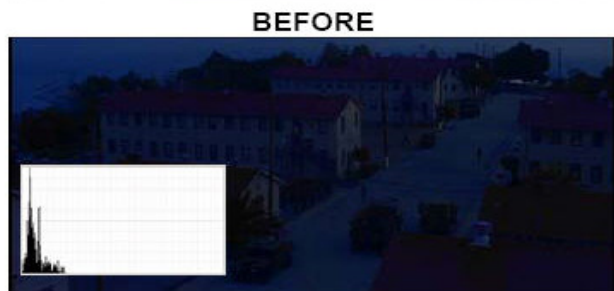
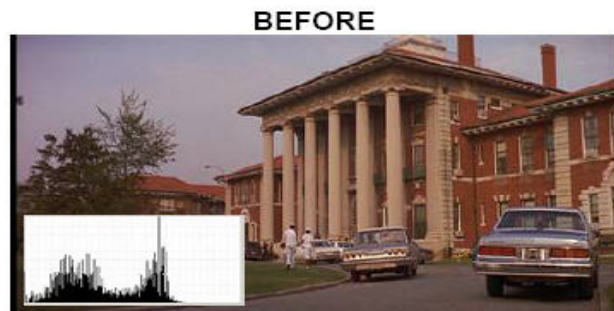
P/N: PTA-8556/8558

Product Name: *AV Show WUXGA*



Video Enhanced by *Adaptive Contrast and Color*

- Extracts luminance histogram on a frame-by-frame basis
- Adaptively increases contrast of dominant luminance range





Video Performance by *ACM-3D*

- Also supports 6-axis and video windowing through DDC/CI

Sport Mode

BEFORE



AFTER



Nature Mode

BEFORE



AFTER



P/N: PTA-8556/8558

Product Name: **AV Show WUXGA**



Specification

TV Input

VGA Input

Video Input

Audio Input

Audio Output

VGA Output

Remote

LED Indicator

Power Requirement

Dimension

VGA Mode Output Resolution

TV Mode Output Resolution

Tuner In

DVI or D-Sub (pass through)

Composite Video RCA Jack

4-pin Mini-Din Connector for S-Video

RCA x3 for YPbPr component

3.5mm Stereo Connector x2

(Audio in and Line in)

3.5mm Stereo Connector (Speaker)

DVI or D-Sub 15-pin Connector

Built-in IR Receiver

Power On/Off Indication

DC-In Jack; 5VDC 2A Adapter

Without stand – 187mm(L)* 126mm(W)* 26mm(H)

With stand – 193mm(L)* 126mm(W)* 26mm(H)

Up to 1920x1200

1024x768

1280x768

1280x1024

1360x768

1440x900

1600x1200

1680x1050

1920x1200

Package Contents

- TV Box Unit
- DVI or D-Sub cable
- 3.5mm to RCA Cable
- 3.5mm Stereo cable
- IR remote control with batteries
- Power adaptor
- User's manual

P/N: PTA-8556/8558
Product Name: *AV Show WUXGA*



FRONT PANNEL

Model A



Model B



REAR PANNEL

DVI Version (PTA-8556)



DC IN DVI OUT DVI IN
SPEAKER OUT LINE IN AUDIO IN
TUNER IN

D-Sub Version (PTA-8558)



DC IN VGA OUT VGA IN
SPEAKER OUT LINE IN AUDIO IN
TUNER IN